




## for NI CompactDAQ

### Quick Start Guide

Revision 1.7.8

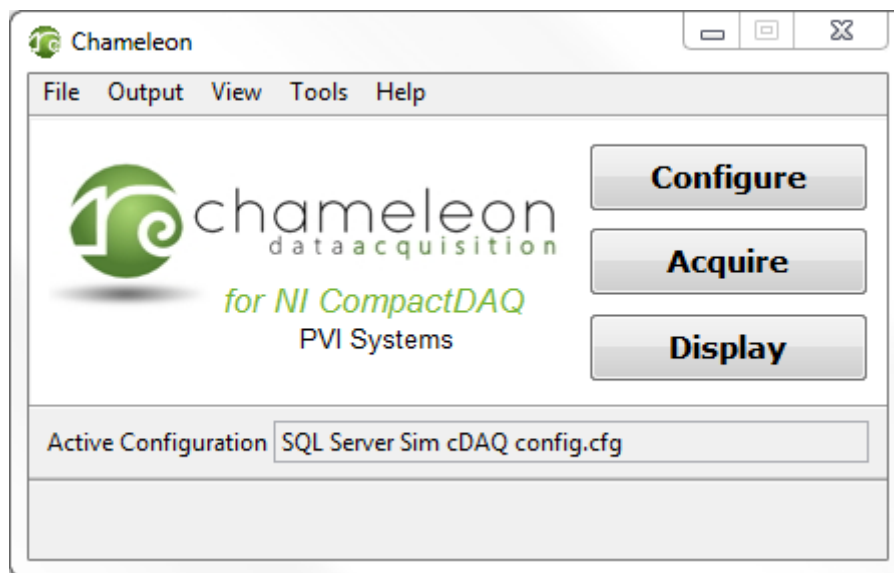
February 2021

# Chameleon Quick Start Guide


Launch **Chameleon** from the desktop icon, . The Getting Started panel will be displayed.



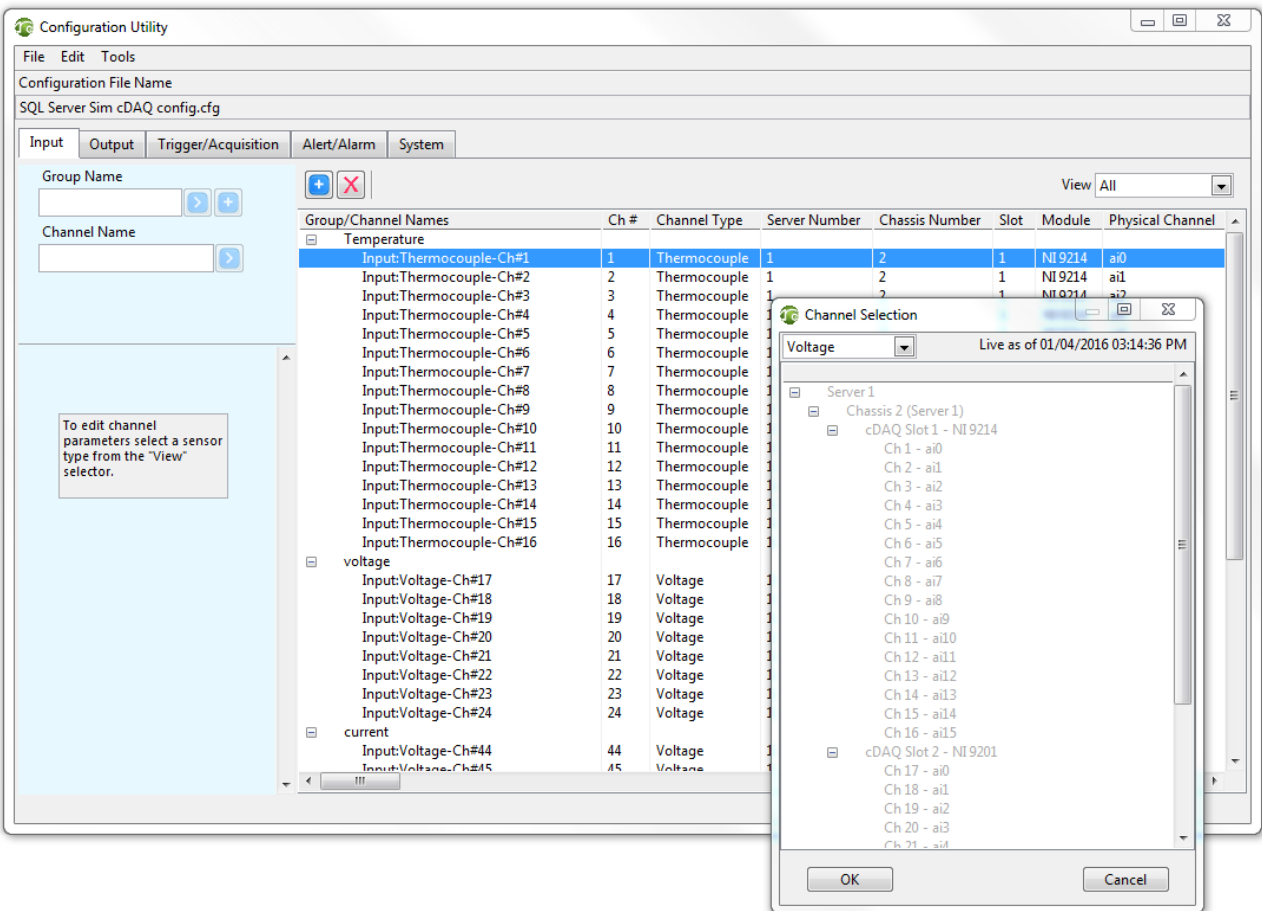
Select, **Continue to Main Menu**. The Chameleon panel will be displayed. **Tutorials describing each step of channel configuration, acquisition, and display are available under the help menu.**



Select, **Configure**

Select the  **button** at the top of the panel. A list of available input channels is displayed. Use the drop down menu to select the type of sensor to add, select the channels to add, and select **OK**. The selected channels are added to the input channel list.

# Chameleon Quick Start Guide



Change the settings as needed by selecting the channel type from the drop down menu titled "View" on the top right of the panel and selecting one or more channels. A list of available settings for the selected channel type appears on the left side of the panel. Set the parameters as desired.

Select the **File** menu and **Save As** to save the configuration settings.

**Close** the Configuration panel.

# Chameleon Quick Start Guide

In the Chameleon panel, select **Acquire**. Select signal monitor from the drop down menu to display the signal monitor panel. This will display signal levels graphically and numerically.

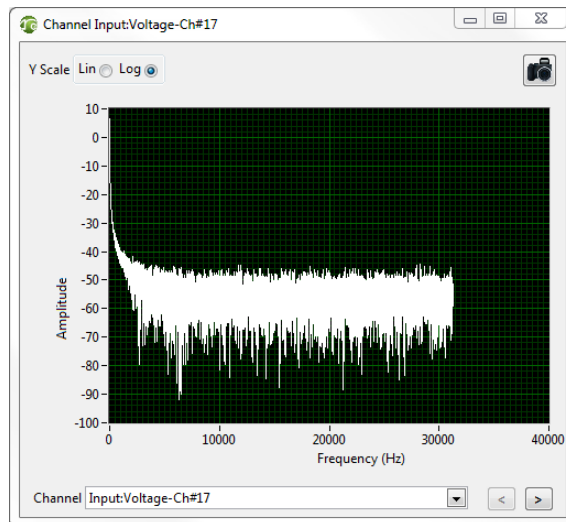
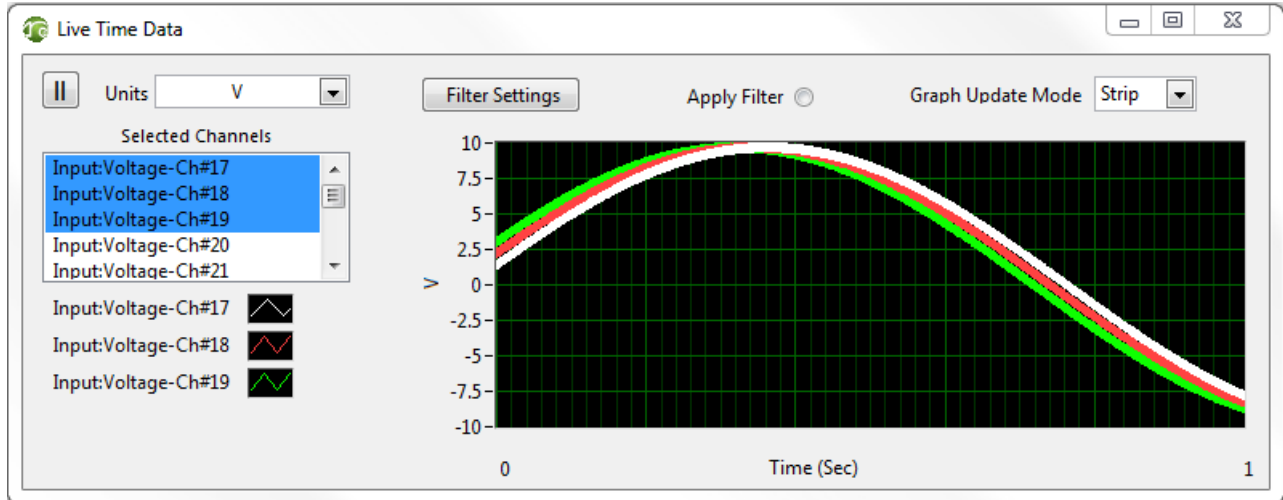
The screenshot shows the 'Acquisition' window with the 'Signal Monitor' panel active. The 'Recording Status' is 'Off' and 'Channel Overload' is also 'Off'. The 'Active Configuration' is 'SQL Server Sim cDAQ config.cfg', 'RMS' is selected, 'Units' is 'EU', 'Alerts' is on, and 'Alarms' is on. The table below shows the signal levels for various channels.

Name	Level	Value	Over-load	Open Short
Input:Voltage-Ch#17		3.672388		
Input:Voltage-Ch#18		4.211387		
Input:Voltage-Ch#19		4.780937		
Input:Voltage-Ch#20		5.360376		
Input:Voltage-Ch#21		5.927883		
Input:Voltage-Ch#22		6.474669		
Input:Voltage-Ch#23		6.990132		
Input:Voltage-Ch#24		7.466359		
Input:Voltage-Ch#44		15.755595		
Input:Voltage-Ch#45		11.241751		
Input:Voltage-Ch#46		6.069833		
Input:Voltage-Ch#47		1.299707		
Input:Thermocouple-Ch#1		304.525360		
Input:Thermocouple-Ch#2		299.059235		
Input:Thermocouple-Ch#3		297.879089		
Input:Thermocouple-Ch#4		298.894135		
Input:Thermocouple-Ch#5		299.717834		
Input:Thermocouple-Ch#6		301.780487		
Input:Thermocouple-Ch#7		303.658844		
Input:Thermocouple-Ch#8		307.346100		

Ready.

# Chameleon Quick Start Guide

Select the **Displays** drop down menu and **Open Time...**, **Open Numeric...**, **Open Frequency...** buttons to create plots of the live data. The time window can display multiple channels, is resizable, can apply filters, and has an editable x-axis scale.

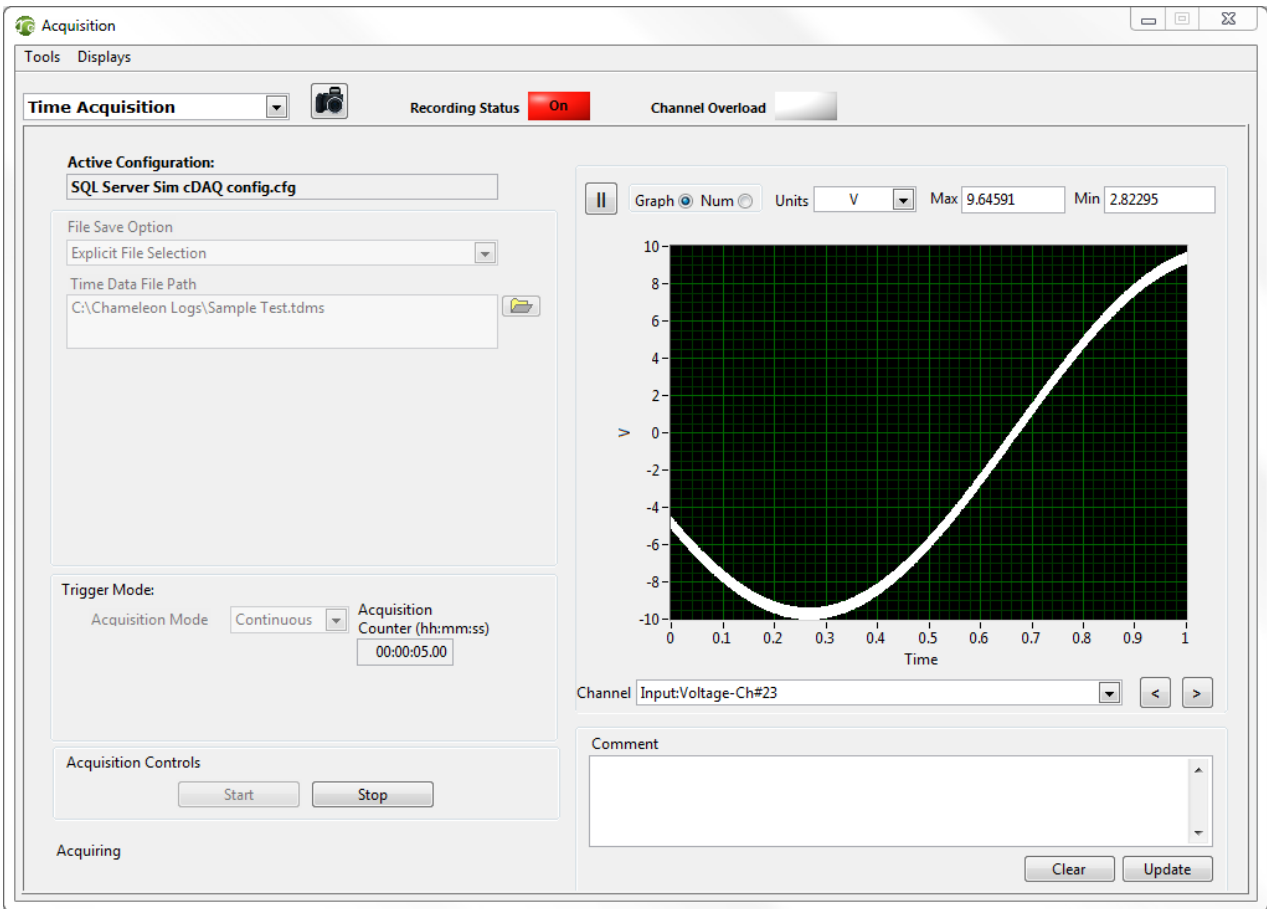


Select **Time Acquisition** tab from the **Acquire** panel.

Set the **File Save Option** to **Explicit File Selection**, enter a file path and name for the TDMS data file. Set the mode to **Finite**, and acquisition time to 10 seconds.

Once the status indicator in the bottom left corner of the panel indicates that the hardware is **Ready**, select the **Start** button to begin the acquisition. The acquisition counter displays the data recoding time.

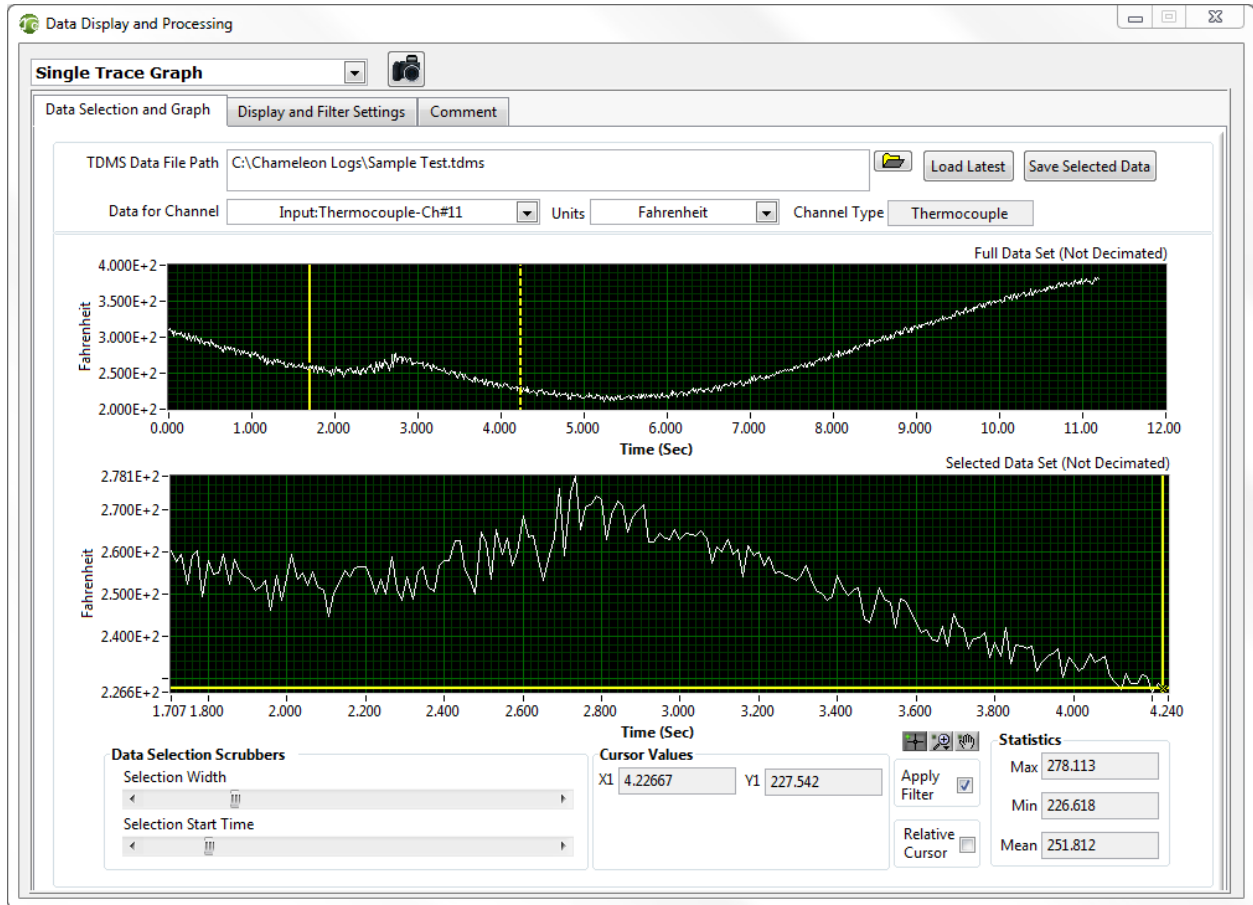
# Chameleon Quick Start Guide



Once the acquisition is complete, **Close** the Time Acquisition panel.

# Chameleon Quick Start Guide

In the Chameleon panel select **Display**.



Use the **TDMS Data File Path** browser select the file created in the previous step. Select the display channel from the **Data for Channel** drop down menu.

After reviewing the data, close the Single Trace Graph panel.

# Chameleon Quick Start Guide

Refer to the *Chameleon User Manual* for additional information on operation and features.

To obtain support for Chameleon for NI PXI/PXIe please visit the PVI website at [chameleondaq.com/support](http://chameleondaq.com/support).

PVI Systems is a [Gold Alliance Partner](#).

© 2021 National Instruments. All rights reserved. LabVIEW, National Instruments, NI, ni.com, and NI CompactDAQ are trademarks of National Instruments. Other product and company names listed are trademarks or trade names of their respective companies. A National Instruments Alliance Partner is a business entity independent from National Instruments and has no agency, partnership, or joint-venture relationship with National Instruments.